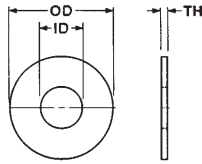


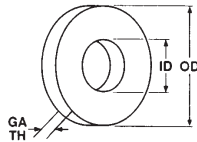


USS (Type A Wide) Flat Washers



Bolt Size In.	Outside Dia. In.	Inside Dia. In.	American Standard Gauge	Approx. Lbs. Per M Pcs.	Approx. No./Pcs. Per Lb.
3/16	9/16	1/4	18 (3/64)	2.8	361
1/4	3/4	5/16	16 (1/16)	6.7	149
5/16	7/8	3/8	14 (5/64)	11.5	87
3/8	1	7/16	14 (5/64)	14.9	67
7/16	1-1/4	1/2	14 (5/64)	24.4	41
1/2	1-3/8	9/16	12 (7/64)	38.5	26
9/16	1-1/2	5/8	12 (7/64)	45.5	22
5/8	1-3/4	11/16	10 (9/64)	77	13
3/4	2	13/16	9 (5/32)	110	9.1
7/8	2-1/4	15/16	8 (11/64)	153	6.5
1	2-1/2	1-1/16	8 (11/64)	188	5.3
1-1/8	2-3/4	1-1/4	8 (11/64)	220	4.5
1-1/4	3	1-3/8	8 (11/64)	260	3.8
1-3/8	3-1/4	1-1/2	7 (3/16)	333	3
1-1/2	3-1/2	1-5/8	7 (3/16)	385	2.6
1-5/8	3-3/4	1-3/4	7 (3/16)	448	2.3
1-3/4	4	1-7/8	7 (3/16)	500	2
1-7/8	4-1/4	2	7 (3/16)	569	1.8
2	4-1/2	2-1/8	7 (3/16)	630	1.6
2-1/4	4-3/4	2-3/8	5 (7/32)	826	1.2
2-1/2	5	2-5/8	4 (15/64)	961	1
2-3/4	5-1/4	2-7/8	3 (1/4)	1100	.9
3	5-1/2	3-1/8	2 (5/32)	1300	.8

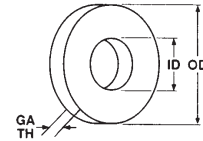
S.A.E. (Type A Narrow) Flat Washers



Bolt Size In.	Outside Dia. In.	Inside Dia. In.	American Standard Gauge	Approx. Lbs. Per M Pcs.	Approx. No./Pcs. Per Lb.
4	5/16	1/8	21 (1/32)	.58	1650
6	3/8	5/32	18 (3/64)	1.25	790
8	7/16	3/16	18 (3/64)	1.7	585
3/16	1/2	7/32	18 (3/64)	2.3	435
12	9/16	1/4	16 (1/16)	3.4	280
1/4	5/8	9/32	16 (1/16)	4.5	222
5/16	11/16	11/32	16 (1/16)	5.2	192
3/8	13/16	13/32	16 (1/16)	7.2	140
7/16	59/64	15/32	16 (1/16)	9.5	105
1/2	1-1/16	17/32	13 (3/32)	18.3	55
9/16	1-3/16	19/32	13 (3/32)	23.4	43
5/8	1-5/16	21/32	13 (3/32)	27.7	36
3/4	1-1/2	13/16	10 (9/64)	47.4	21
7/8	1-3/4	15/16	10 (9/64)	63	16
1	2	1-1/16	10 (9/64)	83	12
1-1/8	2-1/4	1-3/16	10 (9/64)	109	9.2
1-1/4	2-1/2	1-5/16	9 (5/32)	160	6.25
1-3/8	2-3/4	1-7/16	9 (5/32)	190	5.25
1-1/2	3	1-9/16	9 (5/32)	240	4.25

Hardened Steel Washers

Grade 8 S.A.E. Dimensions

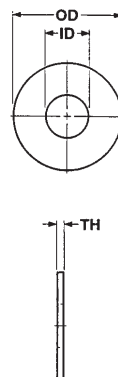


Bolt Size In.	Outside Dia. In.	Inside Dia. In.	Thickness	Approx. Lbs. Per M Pcs.
1/4	5/8	9/32	.055/.072	4.6
5/16	11/16	11/32	.055/.072	5.1
3/8	13/16	13/32	.055/.072	7.2
7/16	59/64	15/32	.055/.072	9.1
1/2	1-1/16	17/32	.097/.121	18.2
9/16	1-3/16	19/32	.097/.121	23.4
5/8	1-5/16	21/32	.122/.146	38.4
3/4	1-15/32	13/16	.122/.146	44.5
7/8	1-3/4	15/16	.136/.160	66.8
1	2	1-1/16	.136/.160	89.4
1-1/8	2-1/4	1-1/4	.136/.160	111.0
1-1/4	2-1/2	1-3/8	.136/.160	138.0
1-1/2	2-3/4	1-1/2	.136/.160	173.0
1-1/2	3	1-5/8	.136/.160	209.0
1-3/4	3-3/8	1-7/8	.178/.201	328.0
2	3-3/4	2-1/8	.178/.201	398.0

(300 Series) Stainless Steel Washers

Bolt Size	Outside Dia. In.	Inside Dia. In.	Thickness	Approx. Wt. Per M Pcs.
1/4	.625	.281	.050	3.2
5/16	.750	.344	.050	4.9
3/8	.875	.406	.050	6.6
3/8	1.000	.406	.050	9.2
7/16	1.125	.500	.062	13.8
1/2	1.250	.531	.062	17.4
5/8	1.500	.688	.078	31.0
3/4	1.875	.812	.109	68.0
7/8	2.250	.937	.109	99.0
1	2.500	1.062	.125	140.0

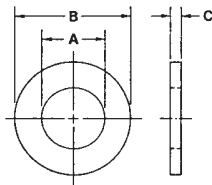
Fender Washers



Bolt Size	Inside Dia. In.	Outside Dia. In.	Thickness	Approx. No. in 20 #
10	7/32	1	.051 .080	1.4M
1/4	9/32	1	.051 .080	1.5M
1/4	9/32	1-1/4	.051 .080	.92M
1/4	9/32	1-1/2	.051 .080	.62M
5/16	11/32	1-1/4	.051 .080	.96M
5/16	11/32	1-1/2	.051 .080	.64M
3/8	13/32	1-1/4	.051 .080	.94M
3/8	13/32	1-1/2	.051 .080	.66M
1/2	17/32	2	.051 .080	.38M

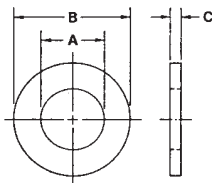


F436 Hardened SAE Flat Washers "Structural"



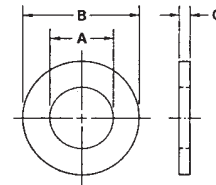
Basic Washer Size	A		B		C	
	Inside Diameter	Outside Diameter	Thickness		Max.	Min.
	Nominal	Nominal				
1/2	0.531	1.062			0.177	.0970
5/8	0.688	1.312			0.177	0.122
3/4	0.812	1.469			0.177	0.122
7/8	0.938	1.750			0.177	0.136
1	1.125	2.000			0.177	0.136
1-1/8	1.250	2.250			0.177	0.136
1-1/4	1.375	2.500			0.177	0.136
1-3/8	1.500	2.750			0.177	0.136
1-1/2	1.625	3.000			0.177	0.136

Hardened USS Flat Washers



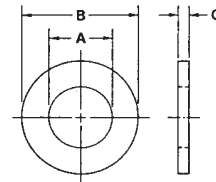
Basic Diameter	A	B	C
	Inside Diameter	Outside Diameter	Thickness
1/4	5/16	3/4	.055/.072
5/16	3/8	7/8	.064/.080
3/8	7/16	1	.064/.080
7/16	1/2	1-1/4	.064/.080
1/2	9/16	1-3/8	.097/.121
9/16	5/8	1-1/2	.097/.121
5/8	21/32	1-3/4	.122/.146
3/4	13/16	2	.122/.146
7/8	15/16	2-1/4	.136/.160
1	1-1/16	2-1/2	.136/.160
1-1/8	1-1/4	2-3/4	.136/.160
1-1/4	1-3/8	3	.136/.160
1-3/8	1-1/2	3-1/4	.136/.160
1-1/2	1-5/8	3-1/2	.136/.160

Super 9 SAE Flat Washers



Basic Washer Size	A		B		C	
	Inside Diameter	Outside Diameter	Thickness		Max.	Min.
	Nominal	Nominal				
1/4	9/32	5/8			0.080	0.074
5/16	11/32	11/16			0.080	0.074
3/8	13/32	13/16			0.080	0.074
7/16	15/32	59/64			0.105	0.098
1/2	17/32	1-1/16			0.129	0.122
9/16	19/32	1-3/16			0.129	0.122
5/8	21/32	1-5/16			0.152	0.145
3/4	13/16	1-1/2			0.190	0.183
7/8	15/16	1-3/4			0.190	0.183
1	1-1/16	2			0.190	0.183
1-1/8	1-1/4	2-1/4			0.190	0.183
1-1/4	1-3/8	2-1/2			0.190	0.183
1-1/2	1-5/8	3			0.190	0.183

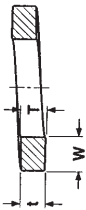
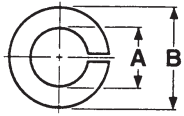
Super 9 USS Flat Washers



Basic Washer Size	A		B		C	
	Inside Diameter	Outside Diameter	Thickness		Max.	Min.
	Nominal	Nominal				
1/4	5/16	3/4			0.080	0.074
5/16	3/8	7/8			0.080	0.074
3/8	7/16	1			0.080	0.074
7/16	1/2	1-1/4			0.105	0.098
1/2	9/16	1-3/8			0.105	0.098
9/16	5/8	1-1/2			0.129	0.122
5/8	11/16	1-3/4			0.129	0.122
3/4	13/16	2			0.152	0.145
7/8	15/16	2-1/4			0.190	0.183
1	1-1/16	2-1/2			0.190	0.183
1-1/8	1-1/4	2-3/4			0.190	0.183
1-1/4	1-3/8	3			0.190	0.183
1-1/2	1-5/8	3-1/2			0.190	0.183

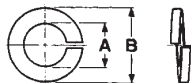
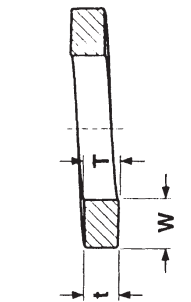


Split Lock Washers (Medium and Heavy)



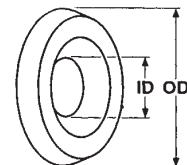
Nominal Washer Size	A		B		T		W		
	Inside Diameter		Outside Diameter		Mean Sect. Thickness $\frac{(T+I)}{2}$		Section Width		
	Max.	Min.	Med. Max.	Heavy Max.	Med. Min.	Heavy Min.	Med. Min.	Heavy Min.	
2	0.086	0.094	0.088	0.172	0.182	0.020	0.025	0.035	0.040
3	0.099	0.107	0.101	0.195	0.209	0.025	0.031	0.040	0.047
4	0.112	0.120	0.114	0.209	0.223	0.025	0.031	0.040	0.047
5	0.125	0.133	0.127	0.236	0.252	0.031	0.040	0.047	0.055
6	0.138	0.148	0.141	0.250	0.266	0.031	0.040	0.047	0.055
8	0.164	0.174	0.167	0.293	0.307	0.040	0.047	0.055	0.062
10	0.190	0.200	0.193	0.334	0.350	0.047	0.056	0.062	0.070
12	0.216	0.227	0.220	0.377	0.391	0.056	0.063	0.070	0.077
1/4	0.250	0.262	0.254	0.489	0.491	0.062	0.077	0.109	0.110
5/16	0.312	0.326	0.317	0.586	0.596	0.078	0.097	0.125	0.130
3/8	0.375	0.390	0.380	0.683	0.691	0.094	0.115	0.141	0.145
7/16	0.438	0.455	0.443	0.779	0.787	0.109	0.133	0.156	0.160
1/2	0.500	0.518	0.506	0.873	0.883	0.125	0.151	0.171	0.176
9/16	0.562	0.582	0.570	0.971	0.981	0.141	0.170	0.188	0.193
5/8	0.625	0.650	0.635	1.079	1.093	0.156	0.189	0.203	0.210
11/16	0.688	0.713	0.698	1.176	1.192	0.172	0.207	0.219	0.227
3/4	0.750	0.775	0.760	1.271	1.291	0.188	0.226	0.234	0.244
13/16	0.812	0.843	0.824	1.367	1.391	0.203	0.246	0.250	0.262
7/8	0.875	0.905	0.887	1.464	1.494	0.219	0.266	0.266	0.281
15/16	0.938	0.970	0.950	1.560	1.594	0.234	0.284	0.281	0.298
1	1.000	1.042	1.017	1.661	1.705	0.250	0.306	0.297	0.319
1-1/16	1.062	1.107	1.080	1.756	1.808	0.266	0.326	0.312	0.338
1-1/8	1.125	1.172	1.144	1.853	1.909	0.281	0.345	0.328	0.356
1-3/16	1.188	1.237	1.208	1.950	2.008	0.297	0.364	0.344	0.373
1-1/4	1.250	1.302	1.271	2.045	2.113	0.312	0.384	0.359	0.393
1-5/16	1.312	1.366	1.334	2.141	2.211	0.328	0.403	0.375	0.410
1-3/8	1.375	1.432	1.398	2.239	2.311	0.344	0.422	0.391	0.427
1-7/16	1.438	1.497	1.462	2.334	2.406	0.359	0.440	0.406	0.442
1-1/2	1.500	1.561	1.525	2.430	2.502	0.375	0.458	0.422	0.458

Hi Collar Split Lock Washers



Basic Washer Size	A		B	T	W
	Inside Diameter		Outside Diameter	Mean Section Thickness	Section Width
	Max.	Min.	Max.	Min.	Min.
#4	0.120	0.114	0.173	0.022	0.022
#5	0.133	0.127	0.202	0.030	0.030
#6	0.148	0.141	0.216	0.030	0.030
#8	0.174	0.167	0.267	0.047	0.042
#10	0.200	0.193	0.294	0.047	0.042
1/4	0.262	0.254	0.365	0.078	0.047
5/16	0.326	0.317	0.460	0.093	0.062
3/8	0.390	0.380	0.553	0.125	0.076
7/16	0.455	0.443	0.647	0.140	0.090
1/2	0.518	0.506	0.737	0.172	0.103
5/8	0.650	0.635	0.923	0.203	0.125
3/4	0.775	0.760	1.111	0.218	0.154
7/8	0.905	0.887	1.296	0.234	0.182
1	1.042	1.017	1.483	0.250	0.208
1-1/8	1.172	1.144	1.669	0.313	0.236
1-1/4	1.302	1.271	1.799	0.313	0.236
1-3/8	1.432	1.398	2.041	0.375	0.292
1-1/2	1.561	1.525	2.170	0.375	0.292
1-3/4	1.811	1.775	2.602	0.469	0.383
2	2.061	2.025	2.852	0.469	0.383
2-1/4	2.311	2.275	3.352	0.508	0.508
2-1/2	2.561	2.525	3.602	0.508	0.508
2-3/4	2.811	2.775	4.102	0.633	0.633
3	3.061	3.025	4.352	0.633	0.633

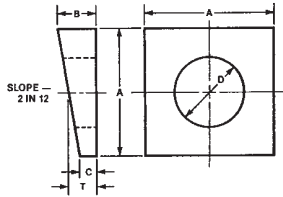
Countersunk Finishing Washers



Basic Screw Size	Outside Diameter	Inside Diameter	
		Min.	Max.
#6	.469	.170	.200
#8	.531	.180	.210
#10	.593	.235	.265
#12	.656	.259	.289
1/4	.781	.305	.355



Malleable Bevel Washers

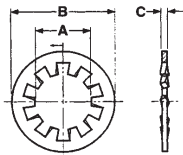


Basic Bolt Size	A		B		C		D	T
	Side Dimension		Thickness		Inside Diameter		Center Thickness	
	Min. ±0.03	Max. ±0.03	Min. ±0.03	±0.03	±0.03	Nominal		
1/4	0.69	0.22	0.09	0.31	0.16			
5/16	1.00	0.31	0.16	0.38	0.23			
3/8	1.25	0.34	0.12	0.44	0.23			
1/2	1.25	0.34	0.12	0.56	0.23			
5/8	1.50	0.38	0.12	0.69	0.25			
3/4	1.50	0.44	0.19	0.81	0.31			
7/8	2.00	0.56	0.22	0.94	0.39			
1	2.00	0.56	0.22	1.06	0.39			
1-1/8	2.25	0.62	0.25	1.25	0.44			
1-1/4	2.25	0.72	0.31	1.38	0.52			
1-3/8	2.75	0.78	0.31	1.50	0.55			
1-1/2	3.00	0.81	0.31	1.62	0.56			

Hardened Bevel Washers

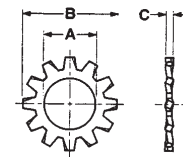
Basic Bolt Size	A		I.D.	T	Taper in Thickness
	Side Dimension		Inside Diameter	Mean Thickness	
	Min.	Nominal	Inches		
1/2	1-3/4	17/32	5/16	1.6	
5/8	1-3/4	11/16	5/16	1.6	
3/4	1-3/4	13/16	5/16	1.6	
7/8	1-3/4	15/16	5/16	1.6	
1	1-3/4	1-1/8	5/16	1.6	
1-1/8	2-1/4	1-1/4	5/16	1.6	
1-1/4	2-1/4	1-3/8	5/16	1.6	
1-3/8	2-1/4	1-1/2	5/16	1.6	
1-1/2	2-1/4	1-5/8	5/16	1.6	

Internal Tooth Lock Washers



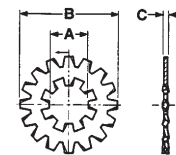
Nominal Washer Size	A		B		C		
	Inside Diameter		Outside Diameter		Thickness		
	Min.	Max.	Max.	Min.	Max.	Min	
2	0.086	0.089	0.095	0.200	0.175	0.015	0.010
4	0.112	0.115	0.123	0.270	0.255	0.019	0.015
6	0.138	0.141	0.150	0.295	0.275	0.021	0.017
8	0.164	0.168	0.176	0.340	0.325	0.023	0.018
10	0.190	0.195	0.204	0.381	0.365	0.025	0.020
12	0.216	0.221	0.231	0.410	0.394	0.025	0.020
1/4	0.250	0.256	0.267	0.478	0.460	0.028	0.023
5/16	0.312	0.320	0.332	0.610	0.594	0.034	0.028
3/8	0.375	0.384	0.398	0.692	0.670	0.040	0.032
7/16	0.438	0.448	0.464	0.789	0.740	0.040	0.032
1/2	0.500	0.512	0.530	0.900	0.867	0.045	0.037
5/8	0.625	0.640	0.663	1.071	1.045	0.050	0.042
1/8	Pipe	0.425	0.410	0.615	0.595	0.022	0.017

External Tooth Lock Washers



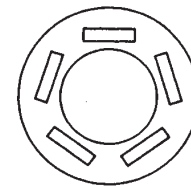
Nominal Washer Size	A		B		C		
	Inside Diameter		Outside Diameter		Thickness		
	Min.	Max.	Max.	Min.	Max.	Min	
4	0.112	0.115	0.123	0.260	0.245	0.019	0.015
6	0.138	0.141	0.150	0.320	0.305	0.022	0.016
8	0.164	0.168	0.176	0.381	0.365	0.023	0.018
10	0.190	0.195	0.204	0.410	0.395	0.025	0.020
12	0.216	0.221	0.231	0.475	0.460	0.028	0.023
1/4	0.250	0.256	0.267	0.510	0.494	0.028	0.023
5/16	0.312	0.320	0.332	0.610	0.588	0.034	0.028
3/8	0.375	0.384	0.398	0.694	0.670	0.040	0.032
7/16	0.438	0.448	0.464	0.760	0.740	0.040	0.032
1/2	0.500	0.513	0.530	0.900	0.880	0.045	0.037
5/8	0.625	0.641	0.663	1.070	1.045	0.050	0.042

Internal - External Tooth Lock Washers



Nominal Washer Size	A		B		C		
	Inside Diameter		Outside Diameter		Thickness		
	Min.	Max.	Max.	Min.	Max.	Min	
6	0.138	0.141	0.150	0.510	0.495	0.028	0.023
8	0.164	0.168	0.176	0.510	0.495	0.028	0.023
10	0.190	0.195	0.204	0.610	0.580	0.034	0.028
1/4	0.250	0.256	0.267	0.760	0.725	0.040	0.032

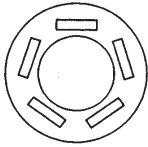
Direct Tension Indicator Washer (For A325 Bolt)



Basic Diameter	Outside Diameter		Inside Diameter		Thickness		Number of Protrusions Equally Spaced
	Min.	Max.	Min.	Max.	w/out protrusion Min.	w/protrusion Max.	
	1/2	1-1/8	1-3/16	17/32	9/16	0.104	
5/8	1-5/16	1-3/8	21/32	11/16	0.126	0.220	4
3/4	1-9/16	1-5/8	25/32	13/16	0.142	0.240	5
7/8	1-13/16	1-7/8	29/32	15/16	0.142	0.240	5
1	1-15/16	2	1-1/32	1-1/16	0.158	0.270	6
1-1/8	2-1/16	2-1/8	1-11/64	1-15/64	0.158	0.270	6
1-1/4	2-3/16	2-1/4	1-19/64	1-23/64	0.158	0.270	7
1-3/8	2-7/16	2-1/2	1-29/64	1-33/64	0.158	0.270	7
1-1/2	2-11/16	2-3/4	1-37/64	1-41/64	0.158	0.270	8

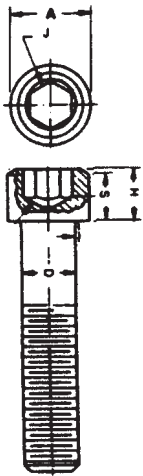


Direct Tension Indicator Washer (For A490 Bolt)



Basic Diameter	Outside Diameter		Inside Diameter		Thickness		Number of Protrusions equally spaced
	Min.	Max.	Min.	Max.	w/out protrusion min.	w/protrusion Max.	
1/2	1-5/16	1-3/8	17/32	9/16	0.104	0.180	5
5/8	1-9/16	1-5/8	21/32	11/16	0.126	0.220	5
3/4	1-11/16	1-3/4	25/32	13/16	0.142	0.240	6
7/8	1-15/16	2	29/32	15/16	0.158	0.260	6
1	2-3/16	2-1/4	1-1/32	1-1/16	0.158	0.270	7
1-1/8	2-7/16	2-1/2	1-11/64	1-15/64	0.158	0.280	7
1-1/4	2-11/16	2-3/4	1-19/64	1-23/64	0.158	0.280	8
1-3/8	2-15/16	3	1-29/64	1-33/64	0.158	0.280	8
1-1/2	3-3/16	3-1/4	1-37/64	1-41/64	0.158	0.280	9

1960 Series Socket Head Cap Screws Suggested Tightening Torques & Dimensions



Nominal Size Or Basic Screw Diameter	D		A		H		S	J		Tightening Torque		
	Body Diameter		Head Diameter		Head Height		Head Side Height	Hexagon Socket Size		UNRC	UNRF	
	Max.	Min.	Max.	Min.	Max.	Min.	Min.	Nom.				
0	0.0600	0.0600	0.0568	0.096	0.091	0.060	0.057	0.054		0.050	-	2.6 (in.-lb.)
1	0.0730	0.0730	0.0695	0.118	0.112	0.073	0.070	0.066	1/16	0.062	4.5	4.8
2	0.0860	0.0860	0.0822	0.140	0.134	0.086	0.083	0.077	5/64	0.078	7.5	8
3	0.0990	0.0990	0.0949	0.161	0.154	0.099	0.095	0.089	5/64	0.078	11	12
4	0.1120	0.1120	0.1075	0.183	0.176	0.112	0.108	0.101	3/32	0.094	16	18
5	0.1250	0.1250	0.1202	0.205	0.198	0.125	0.121	0.112	3/32	0.094	24	24
6	0.1380	0.1380	0.1329	0.226	0.218	0.138	0.134	0.124	7/64	0.109	30	34
8	0.1640	0.1640	0.1585	0.270	0.262	0.164	0.159	0.148	9/64	0.141	55	58
10	0.1900	0.1900	0.1840	0.312	0.303	0.190	0.185	0.171	5/32	0.156	79	90
1/4	0.2500	0.2500	0.2435	0.375	0.365	0.250	0.244	0.225	3/16	0.188	17	19 (ft.-lb.)
5/16	0.3125	0.3125	0.3053	0.469	0.457	0.312	0.306	0.281	1/4	0.250	35	38
3/8	0.3750	0.3750	0.3678	0.562	0.550	0.375	0.368	0.337	5/16	0.312	62	70
7/16	0.4375	0.4375	0.4294	0.656	0.642	0.438	0.430	0.394	3/8	0.375	100	109
1/2	0.5000	0.5000	0.4919	0.750	0.735	0.500	0.492	0.450	3/8	0.375	150	172
5/8	0.6250	0.6250	0.6163	0.938	0.921	0.625	0.616	0.562	1/2	0.500	283	317
3/4	0.7500	0.7500	0.7406	1.125	1.107	0.750	0.740	0.675	5/8	0.625	500	562
7/8	0.8750	0.8750	0.8647	1.312	1.293	0.875	0.864	0.787	3/4	0.750	688	767
1	1.0000	1.0000	0.9886	1.500	1.479	1.000	0.988	0.900	3/4	0.750	1040	1080
1-1/4	1.2500	1.2500	1.2336	1.875	1.852	1.250	1.236	1.125	7/8	0.875	2080	2310
1-1/2	1.5000	1.5000	1.4818	2.250	2.224	1.500	1.485	1.350	1	1.000	3625	4080

Material

- (A) Alloy Steel conforming in all respects to ASTM A 574. Heat treated to Rockwell "C" 39-45 for .500 in. and smaller, and 37-45 for .625 in. and larger.
- (B) Corrosion-Resistant shall conform in all respects to ASTM F837.

Tensile Strength { 0 thru 1/2180,000 psi min
5/8-above170,000 psi min

Suggested Tightening Torques For Other Alloy Socket Screw Products (in.-lbs.)

Nominal Size	Basic Screw Size	Button Head Flat Head Hex Key Size	Button Head Max. Tightening Torque	Flat Head	Low Head		Shoulder Screws	
				Max. Tightening Torque	Hex Key Size	Max. Tightening Torque	Hex Key Size	Max. Tightening Torque
4	.1120	1/16	7.5	9.5	.050	5.0	-	-
5	.1250	5/64	12.5	19.0	.062	9.5	-	-
6	.1380	5/64	12.5	19.0	.062	9.5	-	-
8	.1640	3/32	23.0	30.0	5/64	19.4	-	-
10	.1900	1/8	45.0	65.0	3/32	33.5	-	-
1/4	.2500	5/32	105.0	140.0	1/8	77.9	1/8	50
5/16	.3125	3/16	190.0	245.0	5/32	156.0	5/32	125
3/8	.3750	7/32	300.0	390.0	3/16	273.0	3/16	265
7/16	.4375	1/4	-	580.0	7/32	428.0	-	-
1/2	.5000	5/16	1125.0	1170.0	1/4	615.0	1/4	470
5/8	.6250	3/8	1875.0	2000.0	5/16	1315.0	5/16	1.150
3/4	.7500	1/2	-	2300.0	-	-	3/8	2.000
1	-	-	-	-	-	-	1/2	4.000